



MISERICORDIA
Health Centre
The future of care

OCTOBER 2010

Life @ MIZ

A NEWSLETTER FOR MHC STAFF, PHYSICIANS & VOLUNTEERS

INSIDE THIS ISSUE

- Foundation Message....1
- Walking to God's Lake .2
- Continuing Ed3
- Introducing.....3

FALL UPDATE



ECCE DEVELOPMENTS

Our Eye Care Centre of Excellence is the classic example of how Misericordia Health Centre puts our patients first and constantly changes to meet the needs of our

communities. Here are a few recent developments to share:

LUCENTIS

As of June 1, Manitoba Health began offering Lucentis treatment through our Eye Care Centre of Excellence. Lucentis is a drug to prevent and reverse eye damage caused by wet macular degeneration, a disease that can impair vision and cause blindness. I'm incredibly proud of the innovative model of delivery our team created, working

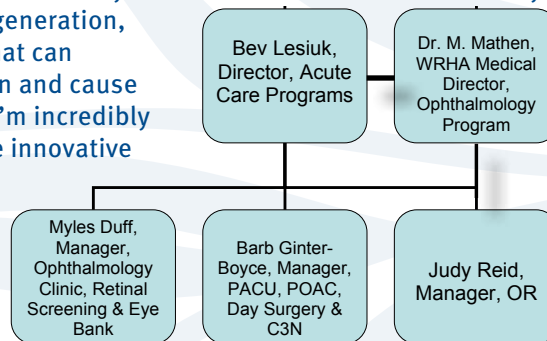
with all levels of government and WRHA to coordinate the Lucentis treatment at retinal specialists' offices as well. **CATARACT CONSOLIDATION** Starting this month, 1,500 cataract procedures will come to Misericordia from the Pan Am Clinic. That means we are now the only

WRHA facility in Winnipeg offering cataract surgery, and we'll have the ability to deliver 8,000 cataract procedures annually. Congratulations to our ECCE team for working closely with the WRHA Surgery Program and Pan Am Clinic to make the consolidation happen so quickly.

MANAGERS' ALIGNMENT

The managers in our ECCE have been aligned to most effectively manage the collective ECCE clinical areas.

Rosie Jacuzzi,
President & C.O.O



AMBULATORY CARE EDUCATION FUND

The MHC Foundation would like to thank one of our very own, Dr. Neil Simonsen, for his outstanding contributions to establish the Dr. Neil Simonsen Ambulatory Care Education Fund. Dr. Simonsen's first priority is his patients but in addition to that, he is committed to providing the funds needed to educate the staff. With the fund that Dr. Simonsen has generously established, the staff of Ambulatory Care



Dr. Simonsen hands Patti Smith the first donation to the Ambulatory Care fund in his name.

will have the opportunity to stay on the cutting edge of providing evidence-based top notch care. This will significantly enhance the quality of care and reputation of the Health Centre. Simply put by Dr. Simonsen, "it is the least we can do for the clients we serve." Thank-you Dr. Simonsen for your generosity. We look forward to a long and fruitful relationship.



MISERICORDIA
Health Centre
FOUNDATION

DID YOU KNOW?

Wednesday, November 3, 2010 is the WRHA's Fourth Annual Blood Day? Blood day is a FREE educational event in support



of Blood Management Awareness Week – November 1-5, 2010. This event will be at the Frederic Gaspard Theatre (Theatre A U of M/HSC) on Wednesday, November 3, 2010 from 7:45 a.m. – 4 p.m. For more information about Blood Day or to pre-register, please call 787-1277 or visit www.bloodconservation.mb.ca.

English at Work classes are back in session? Classes began Thursday, September 9th and will run every Tuesday and Thursday between 3 and 4 p.m. A list of the class locations will be posted in Human Resources and on many notice boards around Misericordia. If you have any questions or if you wish to enroll please email Gail Leylek at gleylek@misericordia.mb.ca or call her directly at extension 8157.

Every Wednesday evening through the month of November, St. Mark's Lutheran Church will be hosting spiritual health education sessions surrounding "Spiritual Perspectives on Death, Dying and Mourning?" Sessions will be held from 7:30 to 9 p.m. each Wednesday in November and are sponsored by the Manitoba Interfaith Council and St. Mark's Lutheran Church. The suggested donation is \$5 per session. Please speak

to your Department Head to find out more.

The Centre for Professional and Applied Ethics at the U of M is hosting a Lecture Series on the Ethics at the End of Life? The second topic, "End of Life Care: Where are the ethical lines?" will be hosted by Professor Wayne Sumner, Professor of Philosophy, University of Toronto, Friday, October 22, 2010 from 12:30 to 1:30 p.m. in the University College Concourse Lounge. Everyone is welcome. For more information, contact Arthur Schafer at schafer@cc.umanitoba.ca.

Accreditation 2010 is fast approaching? Questionnaires will be completed by the Surgery Program from September 15 to October 15, 2010 under the direction of Bev Lesiuk and Urgent Care will complete questionnaires between October 15 and November 15, 2010 under the direction of Lorraine Ogilvie. Tracers will be conducted the week of November 14 to 19, 2010 with Client and Administrative Tracers taking place in Interim Care November 16, 2010 and a Client Tracer will take place in Misericordia Place the morning of November 18, 2010. For more information on accreditation visit www.accreditation.ca.

You are invited to the Memory Services for residents and staff on Tuesday, October 5th at 10:30 a.m. in the Misericordia Place Chapel and Wednesday, October 6th at 10:30 a.m. in the Misericordia Health Centre Chapel.

WALKING TO GOD'S LAKE

Misericordia Place personal care home residents, age 70 -102, sure are getting their exercise this summer. So far, they've walked to God's Lake Narrows!

Well, not ACTUALLY walked, but residents are calculating their steps, plotting bar graphs and keeping close track on a map. And the exercise is helping them sleep better, giving them more energy, improving their strength and so much more! Why, two residents are even out of wheelchairs and walking by themselves! The "Pebble Beach Adventure" project is the brainchild of Kelly Seward, Resident Care Manager, who involved the residents and the entire health-care team to plot the adventure. "The frail elderly benefit most from exercise," says Seward. "This is a fun way to encourage our residents to be stronger and improve their ability to move themselves. Residents follow a points system that sees them receive points for strengthening



God's Lake Manitoba

exercises, walking inside – even to the dining room counts – and outside. "We thought it would take all summer to get to Gimli," says Seward with a laugh, "but we were there in a matter of weeks ... so we kept on going to God's Lake Narrows, where one of our resident's was born." The energy from Kelly's plan was so contagious it crossed the street to Interim Care. "Walking with residents is something we do every day, but it was great to put an additional focus on it. Our residents are feeling the benefits of longer walks," says Tara Wologrocki, Cornish 2 RCM. Thanks to the staff that helped out this initiative and made daily "walks" even more fun!



Kelly Seward poses beside the MP3 exercise tracker with Resident Val Bolland.

get up, get out, and celebrate “in motion”!



October 6, 2010 marks *in motion*'s 5th year anniversary. Gather your family, friends or co-workers and celebrate better health with a 30 minute walk.

JOIN US AT OUR WALKING EVENT!

Lunch'n' Walk

Wednesday, October 6, 2010

Meet at the Wolseley entrance at 12 p.m. (rain or shine)

Route: West down Wolseley, turn LEFT onto Palmerston Ave. continue down past the Community Centre and School to Aubrey St. Turn RIGHT onto Aubrey then RIGHT again onto Wolseley and back to MHC.

Track your participation: Whether you walk with us or on your own, log your time on the sign-up sheet in the Sherbrook hallway until the end of the day October 6 and be entered to win cool prizes! Let's set a new record for workplaces in motion!



Dave and Gabriela show off some of the cool prizes you can win for participating. From T-shirts to frisbees, mini-footballs to waterbottles, there's something for everyone!

Protect patients/residents!

Protect your family!

Get a Flu Shot. . .

Those at increased risk of serious illness from the influenza include seniors, children six months to four years of age, those with chronic illness such as kidney, heart or lung conditions, pregnant women and those with a weakened immune system. When you are immunized you protect your family members who may be in these risk groups and our patients/residents as you are less likely to spread infection.

This year the flu shot will be available to all Manitobans and will include protection against H1N1 as well as two other strains of flu. It is important to get the flu shot every year because the viruses change from year to year and protection provided by the vaccine decreases over time.

MHC staff can attend a flu clinic at any health-care facility. Staff immunization clinics for all facilities are listed on the Intranet home.wrha.mb.ca/influenza/clinics/index.php

Influenza Vaccine is available to MHC Staff & Volunteers:

Tuesday October 12/10	9:30-14:00	Cart on Nursing units
Wednesday October 13/10	9:30-14:00	Cart on Nursing units
Friday October 15/10	21:00- 0100	Cart on Nursing units
Sunday October 17/10	14:00-17:00	Staff Health Office Room 183W
Monday October 18/10	9:00-17:00	Room 327 (Surgical conference room)
Thursday October 21/10	9:30-14:00	Cart on Nursing Units
Thursday October 21/10	19:00-21:00	Staff Health Room 183W
Saturday October 23/10	21:00-0100	Cart on Nursing Units
Monday October 25/10	12:00-17:30	Room 327 (surgical conference room)
Tuesday October 26/10	9:30-11:30	Cart on Nursing Units
Wednesday October 27/10	12:30-14:30	Staff Health Office Room 183W
Thursday October 28/10	06:00-08:00	Cart on Nursing Units
Thursday Nov 4/10	12:30-14:30	Staff Health Office Room 183W
Tuesday Nov 9/10	12:30-14:30	Staff Health Office Room 183W
Wednesday Nov 17/10	12:30-14:30	Staff Health Office Room 183W
Wednesday Nov 24/10	12:30-14:30	Staff Health Office Room 183W
Wednesday Dec 1/10	12:30-14:30	Staff Health Office Room 183W



CONTINUING EDUCATION

Did you know Corie Haslbeck is one of only two Occupational Therapists (OTs) in Canada to receive a Graduate Certificate focusing on Low Vision Rehabilitation for OTs? She and Lara Anderson, of CNIB in Calgary, found the online program offered through the University of Alabama at Birmingham, and decided to pursue their area of personal interest, low vision rehabilitation in their respective careers. Corie quickly discovered, through the program's renown as well as the high numbers of OTs in the program, that although such specialization is rare for OTs in Canada, it is becoming more and more common south of the border. The community and resources she gained through the program extended well beyond the professors and University contacts to fellow students and graduates who apply their techniques, ideas and practices in their everyday work and who can

comment on what works and what doesn't. Corie points out how valuable the learning experience has been. "It was great to learn more about low vision resources in Winnipeg and Canada," she says. "I didn't have time in a regular work day to find out about resources around the city and make up resource guides, but when it became an assignment for the course, I was able to do that research and develop some really good resources to share with staff and clients. "For everything she's learned and taken away from the program, Corie especially wants to thank MHC for its support. From the Health Education Fund to Manitoba Allied Health Care Provider Union Corie received significant financial support



but it was the support from her managers and coworkers that was priceless. "I have been so grateful for the support, financial and emotional support, from everyone here." Corie was so thrilled by her experience she plans to continue studying and work towards a post-professional Masters in science for Occupational Therapy. She hasn't quite determined her thesis yet but you can rest assured "it will be something to do with low vision," she says.

**Attention all sewers:
We need more Angels!**

With December's Angel Campaign less than three months away the Foundation is looking to expand their squad and add up to 50 more Angels.

If you have some talent with a needle and thread, the Foundation is looking for you. Patterns and fabric will be made available to any volunteers who are willing to lend their fingers. For more information or to volunteer, please contact Patti Smith in the Foundation office at 788-8012.

INTRODUCING...

Myles Duff the new Patient Care Manager of: Ophthalmology Clinic, Retinal Screening and Eye



Bank. Myles brings to MHC a rich history in health care. Starting as an HCA and working with polio survivors at 19, Myles has steadily worked his way up through the health-care system in Winnipeg. He's seen the independent facilities form the WRHA, he's seen the emergency room inquest first hand during his three-year

term as the Emergency Room manager at St. Boniface – his position was later split into three - and he's seen Victoria General Hospital undergo its surgical consolidation and lose its orthopedic department. With all of that experience under his belt his addition to the Ophthalmology team comes just in time to usher in redevelopment. He might even be able to lend a hand to the construction team as he has run a side business as a contractor for the last 28 years! With such a busy and varied work life, you might think Myles likes to relax when he goes home. When asked

if this is the case he smiles and says; "I actually coach soccer and hockey." He gestures to six photos on his desk; "I've been blessed with five children and my wonderful wife. I have four boys and my baby girl, the youngest, is my angel." After only a few weeks Myles speaks very positively of his new position as well. "The atmosphere here is so upbeat, there's this sense of family and encouragement... staff here have added responsibilities and get to challenge themselves. It is nice to see the support that allows them to work their way up the way I did."

STAFF GOLF TOURNAMENT 2010



AUGUST:

Retirees:

Linda Coote-Manager,
Clinical & Project
Management in PHCC

New Hires:

Leigh-Ann Patrick-
Scheduling Assistant in
PHCC

Jordan Percy-Scheduling
Assistant in PHCC

Ellie Weibe-Steno II- Sleep
Disorder Centre

Billy Nguyen-Scheduling
Assistant in PHCC

Alen Planincic- Scheduling
Assistant in PHCC

Jennifer Dabu-Clerical Aide
in C3N

Gayle Dyck-RN in Health
Links-Info Santé

Chinyelu Caroline Moneke-
LPN on Cornish 2

Stacey Nohlgren-RN-
Ophthalmology Clinic

Sandy Bruce-OR

Alexandra Buen-Grad

Nurse-Urgent Care

Stephanie Estabrooks-RN-
Cornish 2

Elisa Ritchot-Supervisor-
PHCC

SEPTEMBER - New Hires:

Myles Duff - Patient Care
Manager, Ophthalmology
Clinic, Retinal Screening
and Eye Bank

Pamela Friesen - RN, PACU/
POAC/DS

Janis Lipski - RN, PACU/
POAC/DS

Maureen Matthews - Nurse
IV, Education Facilitator

Emilie Major - MBSP, Senior
Mammography Tech

Shannon Hamnett - MBSP,
Senior Mammography Tech

Mae Reyes - Security,
Operations Clerk

Upendra Agrihotri-
Health Records, Medical
Transcriptionist

Rachel Tayson - Patient
Registrar

Janice Connon-Diagnostic
Imaging – Sr. Technologist

Betty Jane Hiebert- OR-
Registered Nurse